

A

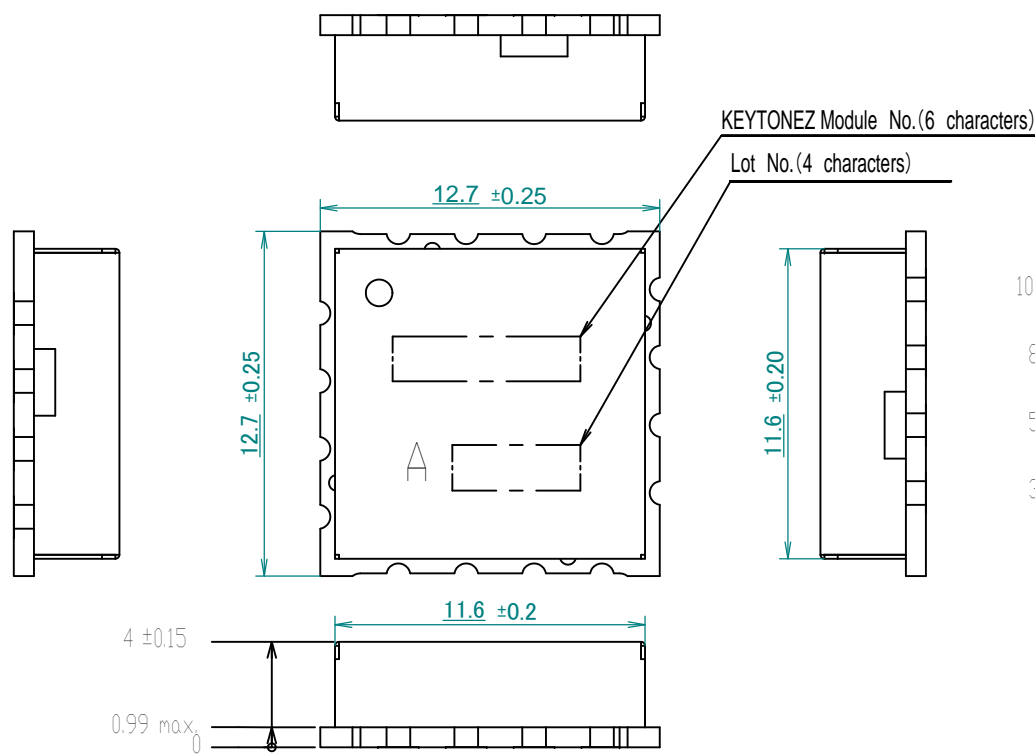
B

A

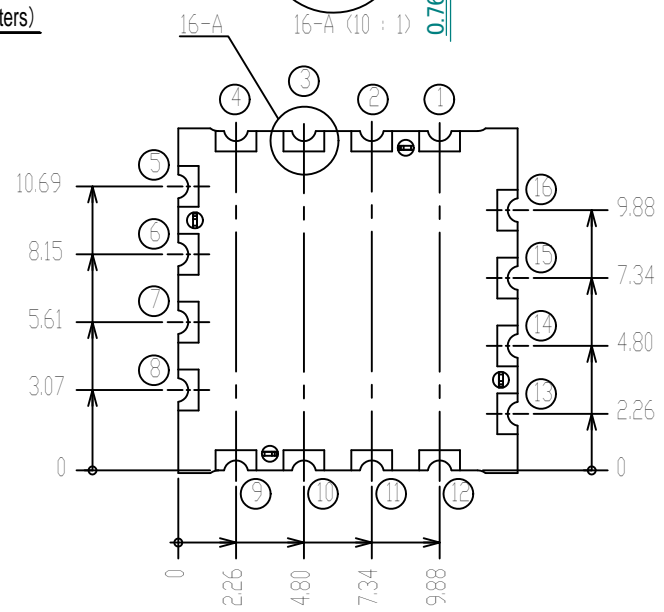
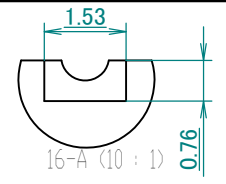
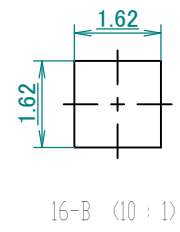
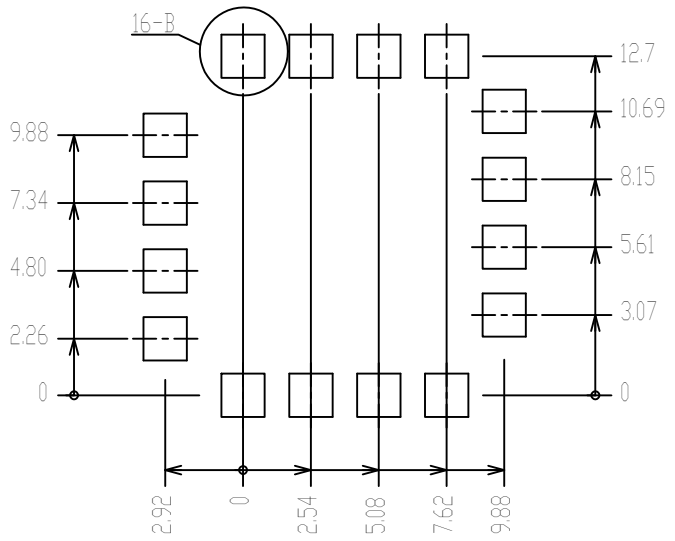
B

C

D



RECOMMENDED FOOTPRINT DIMENSIONS FOR MOUNTING



TERMINAL ASSIGNMENT	
No.	CONTENTS
1	GND
2	GND
3	VCC
4	GND
5	GND
6	GND
7	RF OUT
8	GND
9	GND
10	NC
11	GND
12	GND
13	GND
14	GND
15	VCTL
16	GND

NOTES

- 1.TOLERANCES ARE ± 0.50 , UNLESS OTHERWISE SPECIFIED.
- 2.WE RECOMMEND THAT ANY SIGNAL LINES SHOULD BE NOT LAID OUT UNDER THE VCO, WHERE SHOULD BE GND PLANE.
- 3.WE RECOMMEND THAT SHOULD NOT BE SOLDERED WITH PARTS OTHER THAN A RECOMMENDED MOUNT PATTERN.
- 4.COPLANARITY FOR SOLDERING PADS : 0.10 MAX.
- 5.MARKING METHOD
LASER MARKING OR ENGRAVED MARKING.

KeyToneZ		KEYTONEZ Incorporated	
TITLE			KT-VCO-12 ASSEMBLY
FILENAME			KT-VCO-12xxxx_v1r0.dft
DRAWING NO			1001-120 5 100
REV			1.0
ZONE	SYMB.	DATE or NO.	DESIGNED
MODIFY	CREATE	DSGN	UNIT SIZE SCALE
2015.04.10	2015.04.10	S.Yatsuda	mm A3 5:1
SHEET 1 OF 1			